

# 2

" - "

2 1

2 1 1

$I_{st}$   $I_N$  4~7

10kW

1

2-1

CS

FU1

KM

FR

M

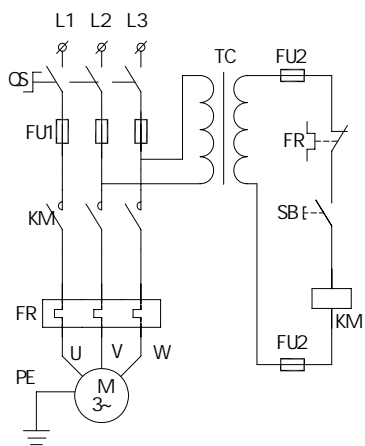
FR

SB

KM

FU2

CS



TC

SB

KM

KM

CS

M

SB

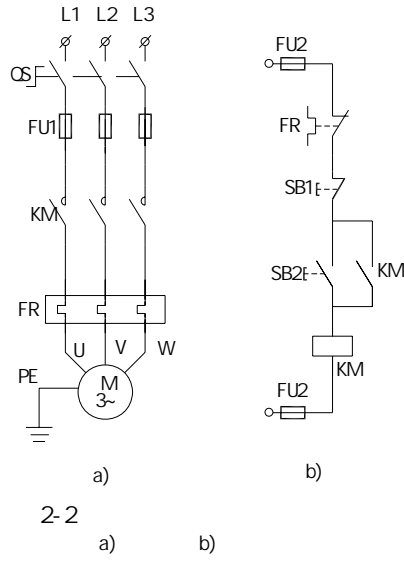
KM

SB1

M

2-1

2



1

OS

SB2 KM

KM

SB2

KM

KM

KM

SB2

KM

KM

M

SB1

KM

KM

M

KM

SB1

SB1

KM

KM

SB1

2

FU1

FU2

FR

3

2-3

SA

SA

"

"

2-3a)

SB2

SA

2-3b)

SB3

SB2

SB3

SB3

KM

SB2

2-3c)

KA

SB3

KA

KM

KM

SB2

L  
7

E--